

UBB - TEST BANK - 1777  
BLOOMINGTON, MN

INDIVIDUAL CUSTOMER

Assets (000's)	Par	TE Yld	Coupon	AL/Mat
TREAS	\$ 750	1.97%	2.00	5.83
AGENCY	\$ 13,872	1.53%	1.78	3.70
Ex MUNI	\$ 12,805	4.72%	3.69	8.22
Tx MUNI	\$ 3,640	2.63%	3.58	3.63
CORP	\$ 5,323	4.96%	1.89	4.43
CD	\$ 3,902	1.47%	1.50	1.68
MBS	\$ 5,447	2.56%	3.01	3.66
CMO	\$ 2,349	2.25%	2.38	2.67
ABS	\$ 1,751	1.59%	1.63	9.78
OTHER	\$ 1,149	2.15%	2.76	59.53
<b>Totals:</b>	<b>\$ 50,988</b>	<b>2.90%</b>	<b>2.56</b>	<b>6.27</b>

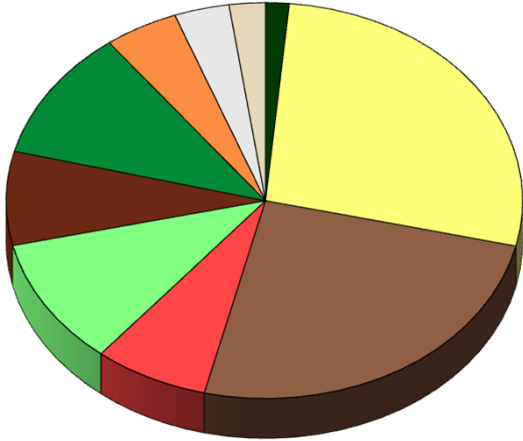
PEER: CON906

Assets (000's)	Avg Par	TE Yld	Coupon	AL/Mat
TREAS	\$ 329	1.02%	1.07	2.11
AGENCY	\$ 1,746	1.54%	1.97	3.61
Ex MUNI	\$ 3,645	3.28%	2.60	5.50
Tx MUNI	\$ 442	3.66%	4.02	4.60
CORP	\$ 117	10.77%	2.36	8.59
CD	\$ 3,005	1.55%	1.55	2.02
MBS	\$ 2,029	2.43%	3.14	4.35
CMO	\$ 343	2.41%	2.80	5.44
ABS	\$ 2	29.17%	0.06	27.54
OTHER	\$ 27	1.56%	1.88	15.28
<b>Totals:</b>	<b>\$ 11,685</b>	<b>2.42%</b>	<b>2.34</b>	<b>4.05</b>

PEER REVIEW:  
ASSET  
ALLOCATION

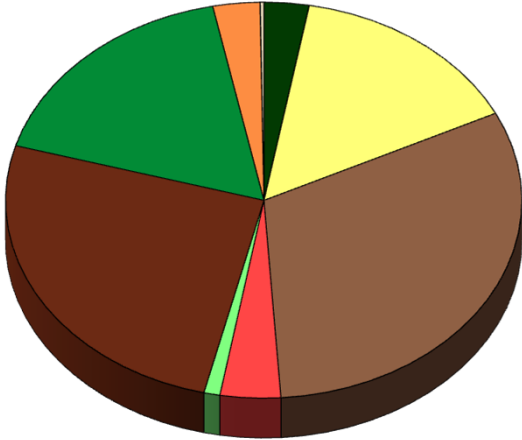
PAR %

- TREAS 2%
- AGENCY 27%
- Ex MUNI 25%
- Tx MUNI 7%
- CORP 10%
- CD 8%
- MBS 11%
- CMO 5%
- ABS 3%
- OTHER 2%

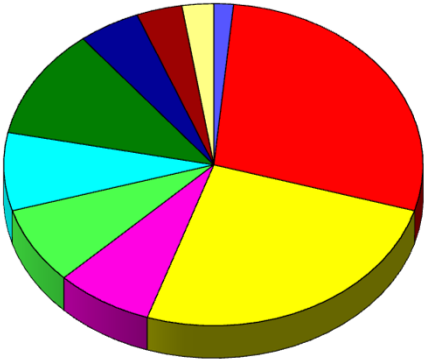


PAR %

- TREAS 3%
- AGENCY 15%
- Ex MUNI 31%
- Tx MUNI 4%
- CORP 1%
- CD 26%
- MBS 17%
- CMO 3%
- ABS 0%
- OTHER 0%

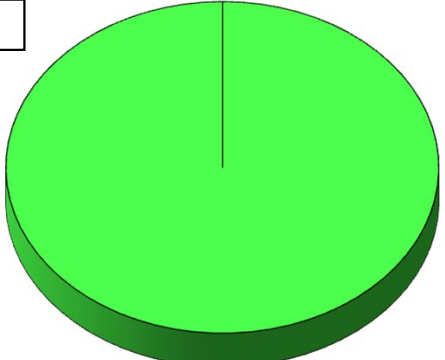


**AFS BOOK**



- TRESAS 2%
- Ex MUNI 26%
- CORP 8%
- MBS 11%
- ABS 4%
- AGENCY 28%
- Tx MUNI 7%
- CD 8%
- CMO 5%
- OTHER 2%

**INDIVIDUAL CUSTOMER**

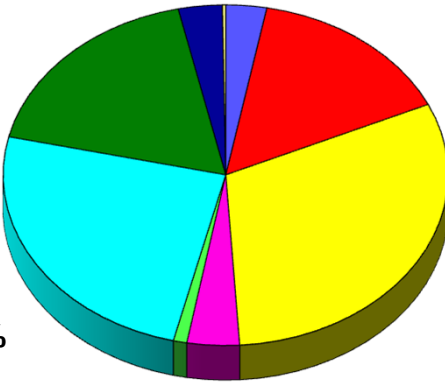


- CORP 100%

**HTM BOOK %**

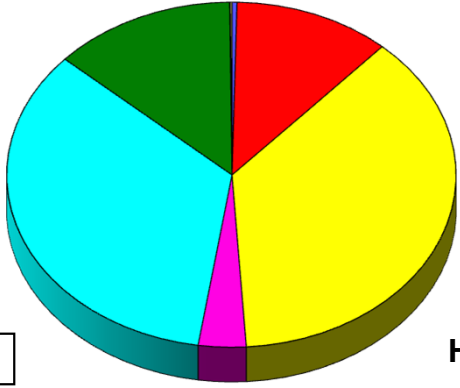
**PEER REVIEW:  
AFS/HTM ALLOCATION**

**AFS BOOK %**



- TRESAS 3%
- Tx MUNI 4%
- MBS 18%
- OTHER 0%
- AGENCY 15%
- CORP 1%
- CMO 3%
- ABS 0%
- Ex MUNI 31%
- CD 25%

**PEER: CON906**



- TRESAS 0%
- Tx MUNI 4%
- CMO 0%
- AGENCY 11%
- CD 34%
- OTHER 0%
- Ex MUNI 37%
- MBS 13%

**HTM BOOK %**

UBB - TEST BANK - 1777  
BLOOMINGTON, MN

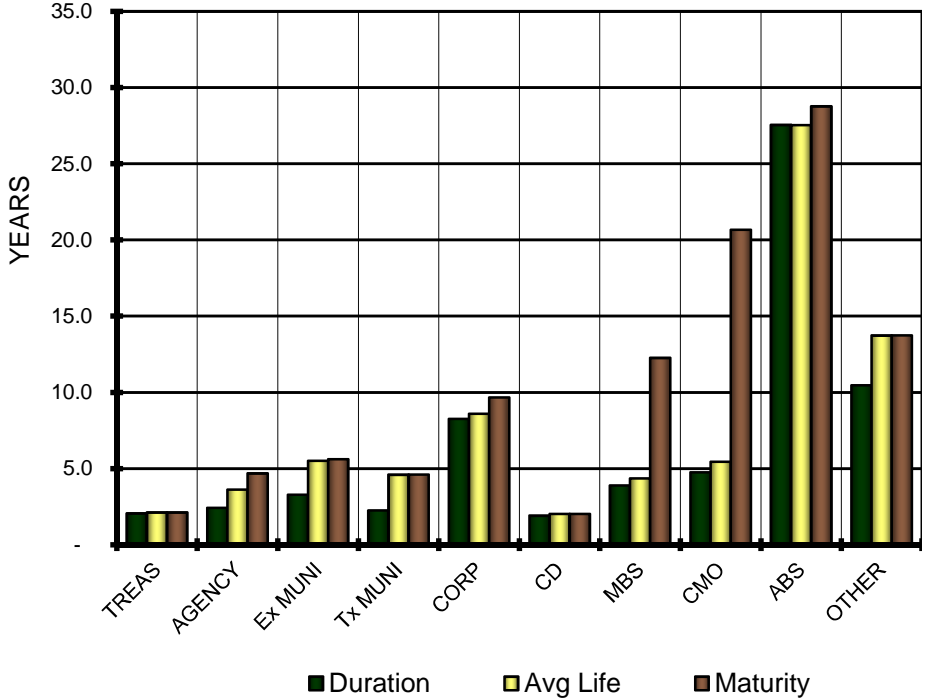
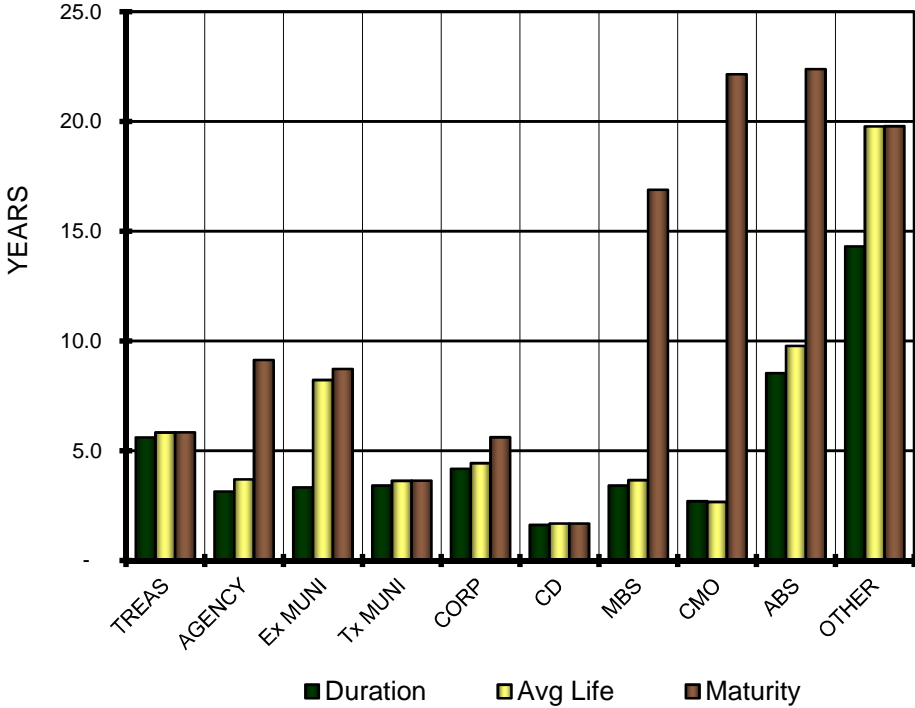
INDIVIDUAL CUSTOMER

Asset	Duration	Avg Life	Maturity
TREAS	5.6	5.8	5.8
AGENCY	3.1	3.7	9.1
Ex MUNI	3.3	8.2	8.7
Tx MUNI	3.4	3.6	3.6
CORP	4.2	4.4	5.6
CD	1.6	1.7	1.7
MBS	3.4	3.7	16.9
CMO	2.7	2.7	22.1
ABS	8.5	9.8	22.4
OTHER	14.3	19.8	19.8
Totals:	3.7	5.3	9.8

PEER: CON906

Asset	Duration	Avg Life	Maturity
TREAS	2.1	2.1	2.1
AGENCY	2.4	3.6	4.7
Ex MUNI	3.3	5.5	5.6
Tx MUNI	2.3	4.6	4.6
CORP	8.3	8.6	9.7
CD	1.9	2.0	2.0
MBS	3.9	4.3	12.3
CMO	4.8	5.4	20.7
ABS	27.5	27.5	28.8
OTHER	10.5	13.7	13.7
Totals:	2.9	4.0	6.1

PEER REVIEW:  
MATURITY ANALYSIS



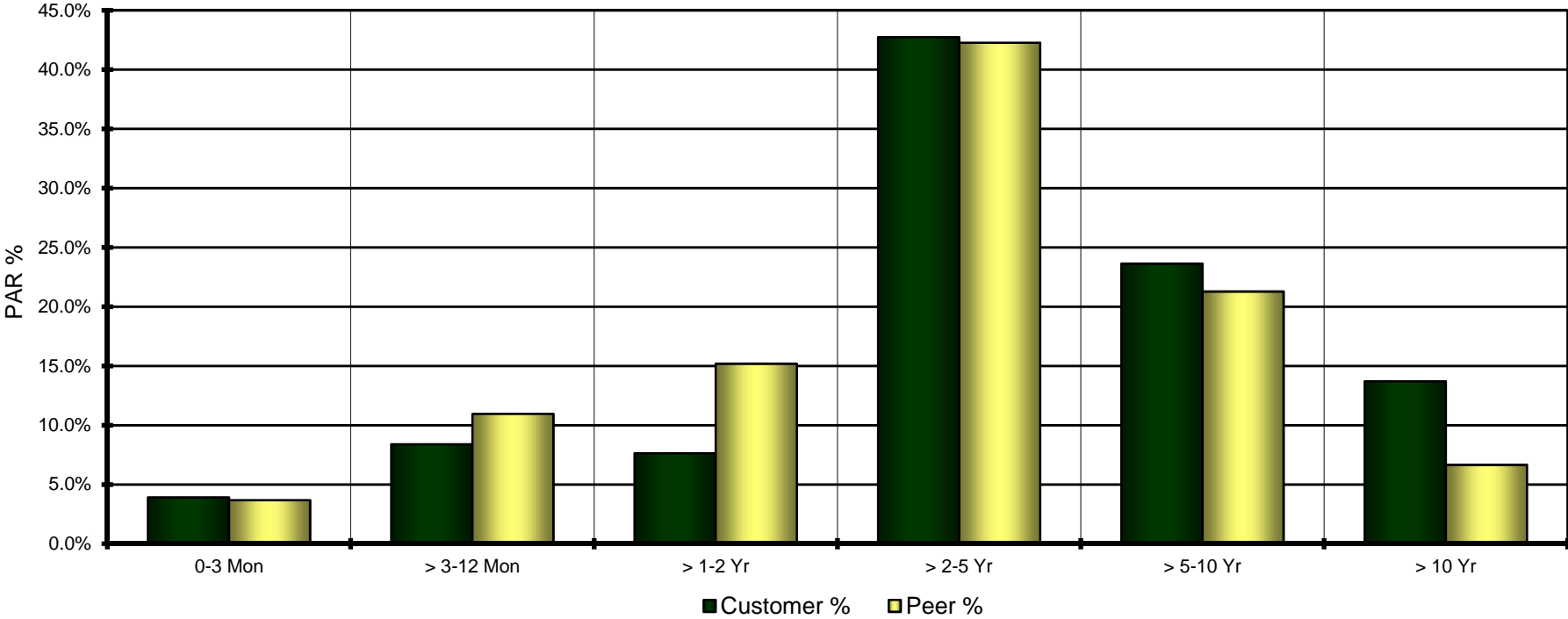
**INDIVIDUAL CUSTOMER**

Avg Life	Par	Customer %
0-3 Mon	\$ 1,988	3.9%
> 3-12 Mon	\$ 4,280	8.4%
> 1-2 Yr	\$ 3,896	7.6%
> 2-5 Yr	\$ 21,789	42.7%
> 5-10 Yr	\$ 12,046	23.6%
> 10 Yr	\$ 6,990	13.7%
<b>Totals (000's):</b>	<b>\$ 50,989</b>	<b>100.0%</b>

**PEER REVIEW:  
 AVERAGE LIFE  
 PERCENTAGE**

**PEER: CON906**

Avg Life	Avg Par	Peer %
0-3 Mon	\$ 430	3.7%
> 3-12 Mon	\$ 1,280	11.0%
> 1-2 Yr	\$ 1,774	15.2%
> 2-5 Yr	\$ 4,939	42.3%
> 5-10 Yr	\$ 2,486	21.3%
> 10 Yr	\$ 777	6.6%
<b>Totals (000's):</b>	<b>\$ 11,686</b>	<b>100.0%</b>



UBB - TEST BANK - 1777  
BLOOMINGTON, MN

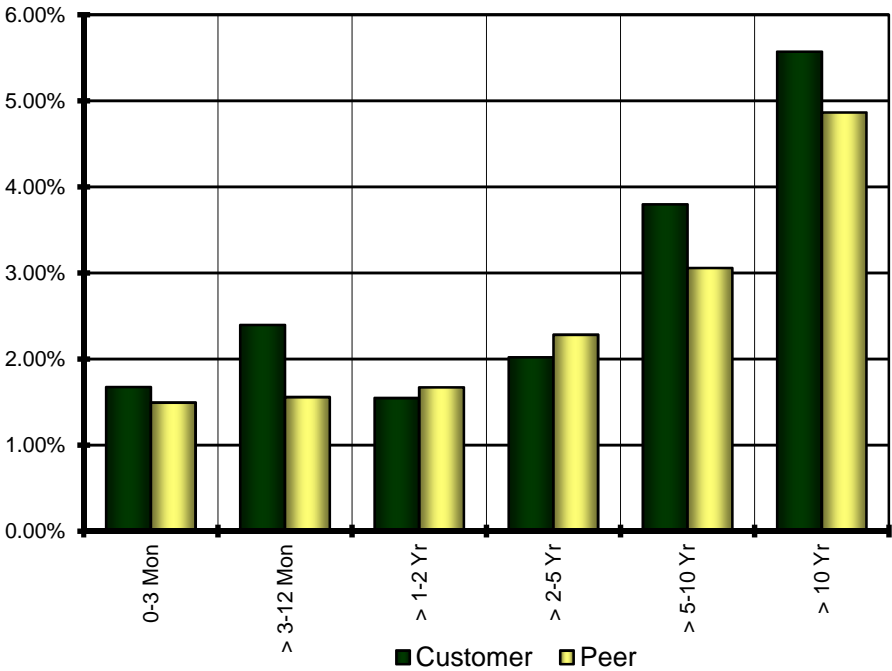
Avg Life	Tax Eq Yields	
	Customer	Peer
0-3 Mon	1.67%	1.49%
> 3-12 Mon	2.39%	1.56%
> 1-2 Yr	1.55%	1.67%
> 2-5 Yr	2.02%	2.28%
> 5-10 Yr	3.80%	3.06%
> 10 Yr	5.57%	4.86%
Totals:		

PEER REVIEW:  
YIELD ANALYSIS

PEER: CON906

Asset	Tax Eq Yields	
	Customer	Peer
TREAS	1.97%	1.02%
AGENCY	1.53%	1.54%
Ex MUNI	4.72%	3.28%
Tx MUNI	2.63%	3.66%
CORP	4.96%	10.77%
CD	1.47%	1.55%
MBS	2.56%	2.43%
CMO	2.25%	2.41%
ABS	1.59%	29.17%
OTHER	2.15%	1.56%
Totals:	2.90%	2.42%

AVERAGE LIFE



ASSET TYPE

